

Refinish - Package 12				
Asset ID #/Code	Tomochichi Location	Annex Location	Name	Size (W x D x H)
<b>PRIORITY LEVEL 1</b>				
103	B234 Bankruptcy Visiting Judge's Chamber	3.147 Judge Coleman's Chambers	Desk, Executive, Bevel Series	72" x 48" x 32"
4089	B228 Bankruptcy Courtroom	3.102 Attorney Conf Room A	Attorney Table w/glass top	72"x 36" x 31"
5085	B228 Bankruptcy Courtroom	3.103 Attorney Conf Room B	Attorney Table w/glass top	72"x 36" x 31"
6118	B239B Judge Coleman's Robing Room	3.147 Judge Coleman's Chambers	Credenza, Bevel Series	72" x 19" x 31"
6498	B218 Chief Deputy Office	3.145 Judge Coleman's JA	Credenza w/2 Doors and 2 Drawers, Bevel Series	70" x 19" x 31"
6499	B218 Chief Deputy Office	3.145 Judge Coleman's JA	Desk, Executive, Bevel Series	72" x 44" x 31"
<b>PRIORITY LEVEL 2</b>				
508	P100A Lobby	3.104 Lobby	Bench	71" x 20" x 35"
513	P100A Lobby	3.104 Lobby	Bench	71" x 20" x 35"
525	P100A Lobby	3.104 Lobby	Bench	71" x 20" x 35"
5330	BHallB Bankruptcy Hallway B	2.100 Lobby	Bench	
5331	BHallB Bankruptcy Hallway B	2.100 Lobby	Bench	
5335	BHallB Bankruptcy Hallway B	2.100 Lobby	Bench	
5336	BHallC Bankruptcy Hallway C	3.104 Lobby	Bench	
5371	BHallB Bankruptcy Hallway B	3.104 Lobby	Bench	
5377	BHallB Bankruptcy Hallway B	3.104 Lobby	Bench	
5397	BHallB Bankruptcy Hallway B	3.104 Lobby	Bench	
6482	BHallB Bankruptcy Hallway B	3.104 Lobby	Bench	
<b>PRIORITY LEVEL 3</b>				
5202	B226 Clerk's Office	2.134 Clerk's Office	Coffee Table, Oval	36" x 28" x 18"
6458	B218 Chief Deputy Office	2.124 Chief Deputy Office	Table, Round	20" dia x 29"
6459	B218 Chief Deputy Office	2.132 Bankruptcy Conference Area	End Table w/Lower Shelf	17" x 26" x 25"
6473	B218 Chief Deputy Office	2.132 Bankruptcy Conference Area	End Table w/Lower Shelf	17" x 26" x 25"



508



513





525





This desk is notable for its use in the

Alexander A. Leavitt

Judge, United States District Court

Appointed 1855 - Retired 1866

Thomas W. Lawrence

Judge, United States Bankruptcy Court

Appointed 1875 - Retired 1888

Lawrence W. Davis, Jr.

Judge, United States Bankruptcy Court

Appointed 1886 -







2019 NORTON QUICK REFERENCE PAMPHLET

Small black plaque with illegible text.

























4089















5085















5202





5330

5330







5331



5335

5335











U.S. BANN  
05





5336

5336







5371











5377

5377







145

5397









6118





6458

6458







6459









6473







6482







5013



6498







JBL

Stack of papers

Stack of papers

SUNSHINE WHITE COFFEE

Printer

Blue trash can



6499















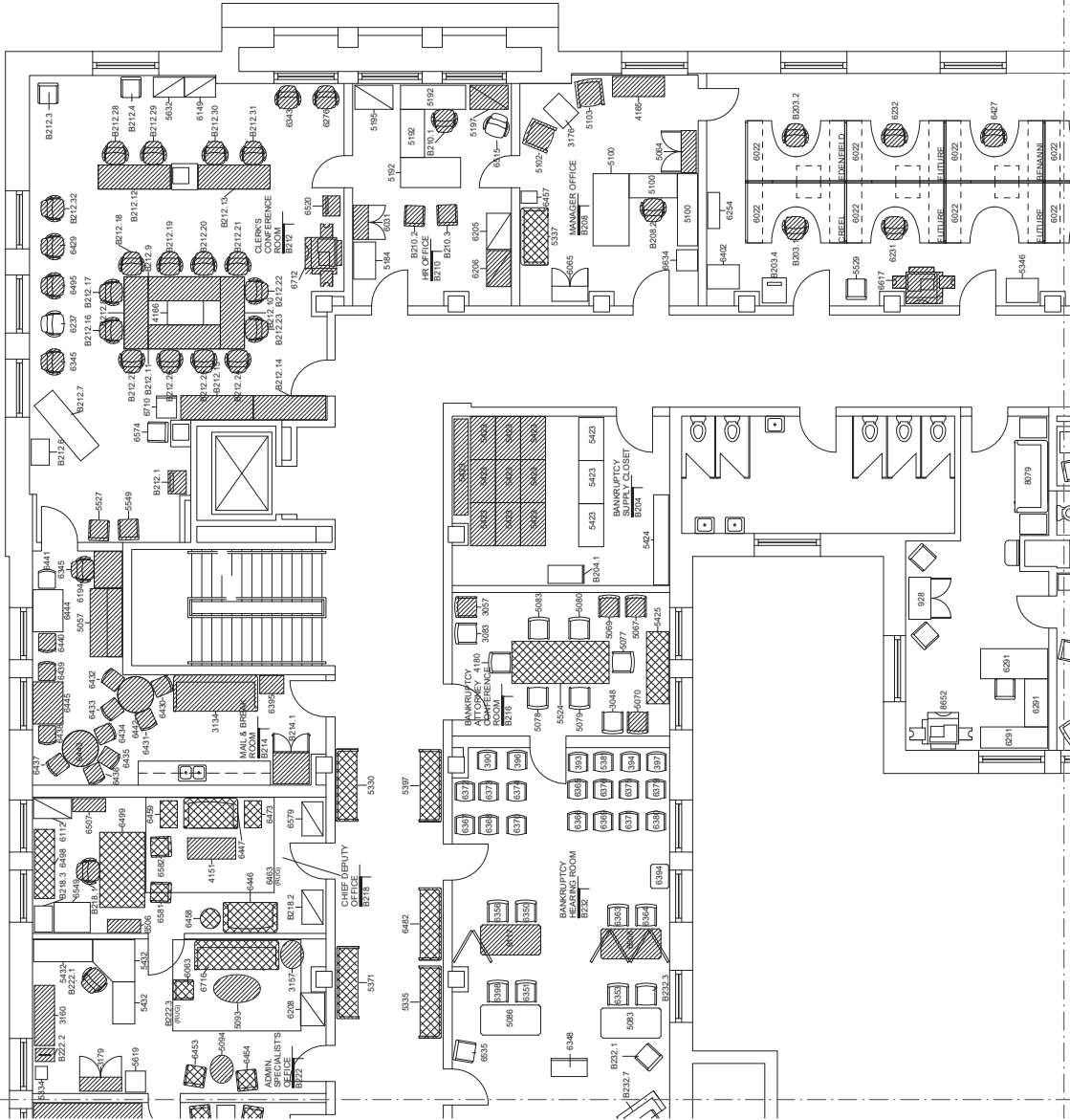
Contract No. \_\_\_\_\_

Sheet No. \_\_\_\_\_

Owner Name \_\_\_\_\_

**FURNITURE KEY**

-  FURNITURE TO BE RELOCATED
-  10/73# — ASSET ID#
-  10/73# — ASSET ID#
-  RELOCATED AND REPHUPOLSTERED, REFINISHED OR REPAIRED FURNITURE



Project Client: **ADMINISTRATIVE OFFICE OF THE US COURTS (AOUS)**

**FURNITURE ACQUISITION SERVICES**  
 TOMOCHIHI CORPORATION  
 25 WALL STREET  
 HOUSTON, TX 77002

Number	Description	Date

**FURNITURE LAYOUTS FOR FINAL ACQUISITION PLAN**  
 JUNE 5, 2020

200 File: E:\000008  
 DRAWING: 200\_0000  
 Drawing Sheet Title:

**TOMOCHIHI CORPORATION**  
**COURTHOUSE FURNITURE PLAN - LEVEL 2 - AREA B**

Drawing Sheet Number:  
**IF-106**  
 Owner's Drawing Sheet No.:

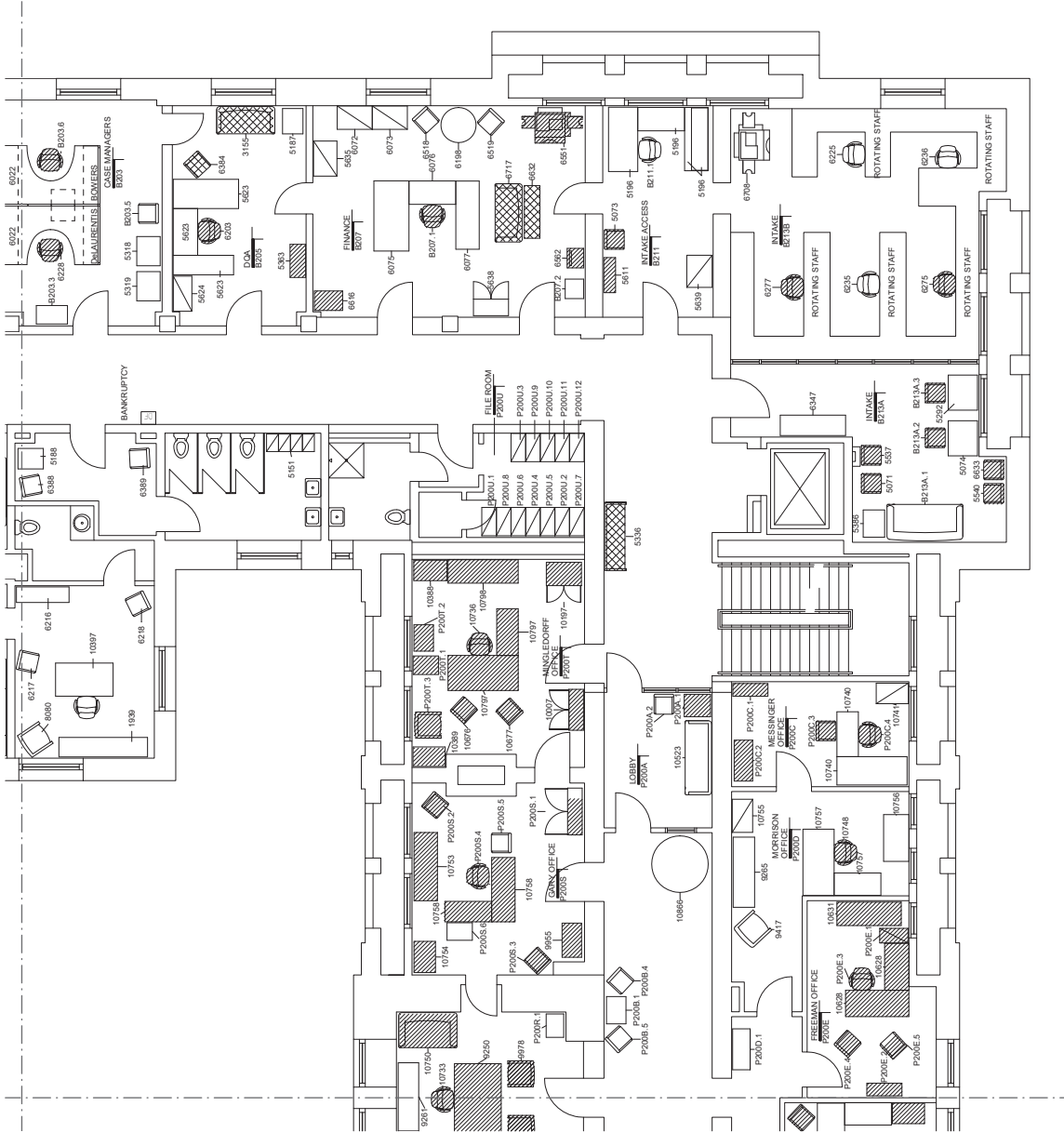
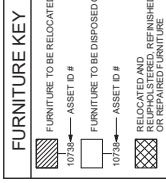
**1 EXISTING FURNITURE PLAN - LEVEL 2 - AREA B**  
 SCALE: 1/4" = 1'-0"



Contract No.

Date:

General Notes



**1** EXISTING FURNITURE PLAN - LEVEL 2 - AREA D  
 SCALE: 1/8" = 1'-0"



Project Client: FEDERAL BUREAU OF INVESTIGATION  
 U.S. DEPARTMENT OF JUSTICE

**FURNITURE ACQUISITION SERVICES**

2000 BROADWAY  
 25TH FLOOR  
 NEW YORK, NY 10002

Number	Description	Date



**FURNITURE LAYOUTS FOR FINAL ACQUISITION PLAN**  
 JUNE 5, 2020

DWGS No.: **IF-108**  
 REV: 1  
 DATE: 06/05/20  
 DRAWN BY: JACOB  
 CHECKED BY: JACOB

**TOMOCHICHI COURTHOUSE FURNITURE PLAN - LEVEL 2 - AREA D**

Drawing Sheet Title:  
**IF-108**  
 Drawing Sheet Number:  
 Owner: [Redacted]

Consultants:

Seals:

General Notes:

Project Client:  
ADMINISTRATIVE OFFICE OF THE U.S. COURTS (AOUSC)

**FURNITURE ACQUISITION SERVICES**

ANNEX  
124 BARNARD STREET  
SAVANNAH, GA 31401

Number	Description	Date



**FURNITURE LAYOUT AFTER PROCUREMENT/MIGRATION PLAN**  
**NOVEMBER 30, 2020**

CAD File: \_\_\_\_\_  
Project No.: FCYC805  
Copyright: 2018 Jacobs

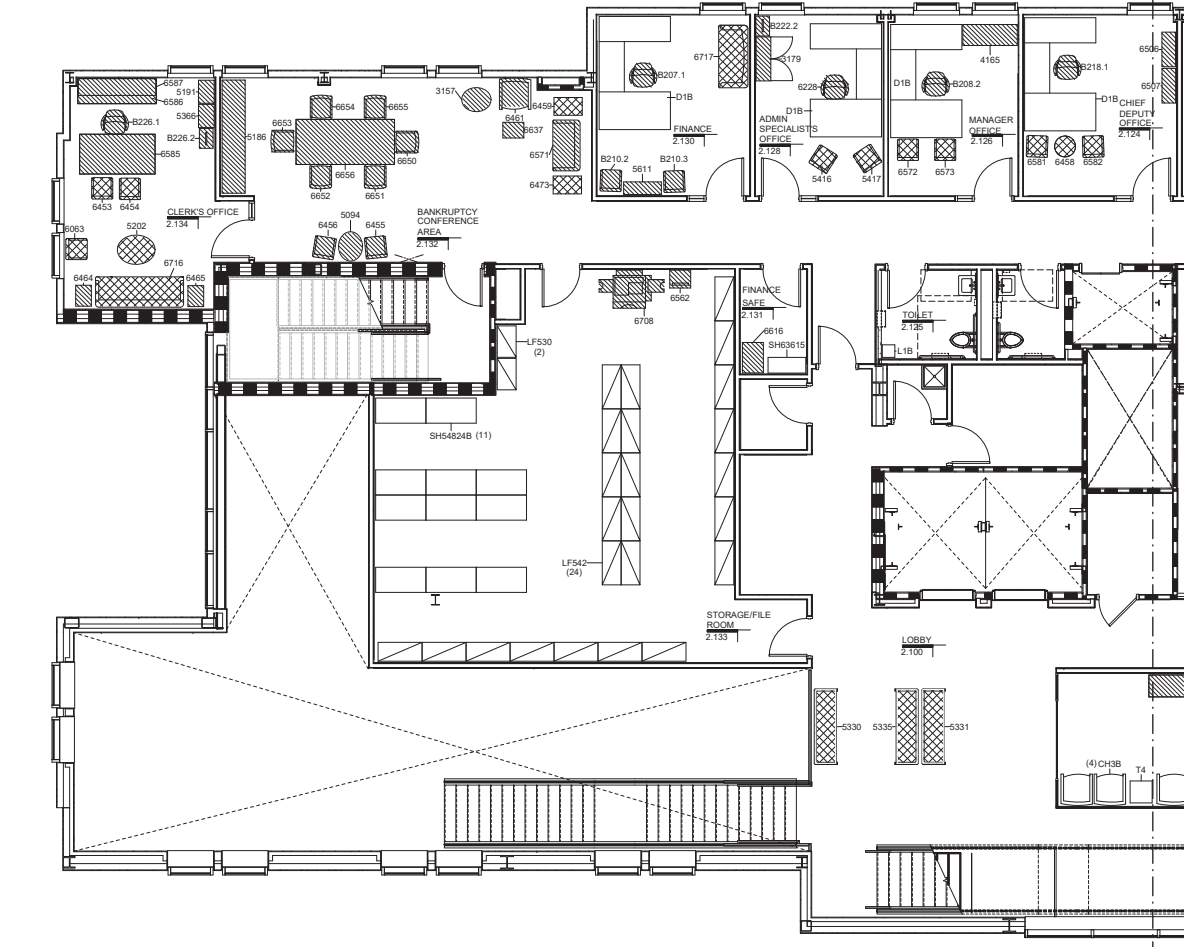
Drawing Sheet Title:  
**ANNEX FURNITURE PLAN -  
LEVEL 2 - AREA A**

**FURNITURE KEY**

- RELOCATED FURNITURE
- 10738 ← ASSET ID #
- NEW FURNITURE
- RELOCATED AND REUPHOLSTERED, REFINISHED OR REPAIRED FURNITURE

**FURNITURE LEGEND - NEW**

TYPE MARK	DESCRIPTION
BK1	2 HIGH BOOKCASE 30X15
CH1P	TASK CHAIR - PROBATION
CH2	STACK CHAIR
CH3B	WAITING AREA CHAIR - BANKRUPTCY
CH3P	WAITING AREA CHAIR - PROBATION
CH4B	CONFERENCE CHAIR - BANKRUPTCY
CH4P	CONFERENCE CHAIR - PROBATION
CH5	BREAK AREA CHAIR
CH8	SIDE CHAIR W/ TABLE ARM
CH7	TASK CHAIR, COURTROOM
CH8	JUDGES CHAIR
CH9	OFFICER CHAIR
CH9W	WITNESS CHAIR
CH10	TASK STOOL, COUNTER HEIGHT
CL1	CLOCK, COURTROOM
D1B	U-SHAPED DESK - BANKRUPTCY
D1P	U-SHAPED DESK - PROBATION
D2	SIT TO STAND DESK
DP1	DISPLAY CASE
L1B	LOCKER W/ CUBBIES 12X12 - BANKRUPTCY
L1P	LOCKER W/ CUBBIES 12X12 - PROBATION
LF230B	2 HIGH LATERAL FILE 30X18 - BANKRUPTCY
LF230P	2 HIGH LATERAL FILE 30X18 - PROBATION
LF236	2 HIGH LATERAL FILE 36X18
LF336	3 HIGH LATERAL FILE 36X18
LF436	4 HIGH LATERAL FILE 36X18
LF530	5 HIGH LATERAL FILE 30X18
LF542	5 HIGH LATERAL FILE 42X18
MW1	MICROWAVE
P1	PODIUM
R1	REFRIGERATOR
S1	SEAL, COURTROOM
SH53624	HEAVY DUTY SHELVING 36X24
SH54824B	HEAVY DUTY SHELVING 48X24 - BANKRUPTCY
SH54824P	HEAVY DUTY SHELVING 48X24 - PROBATION
SH63615	MEDIUM DUTY SHELVING 36X15
T1	TABLE 60X24
T2	TABLE 72X36
T3	TABLE 36X36
T4	TABLE 22X22
T5	TABLE 60X30
WS1	WORKSTATION - PROBATION EMPLOYEE
WS2	WORKSTATION - BANKRUPTCY CASE MANAGER
WS3	WORKSTATION - PROBATION CLERICAL
WCS1	WORKSURFACE - CUT TO FIT



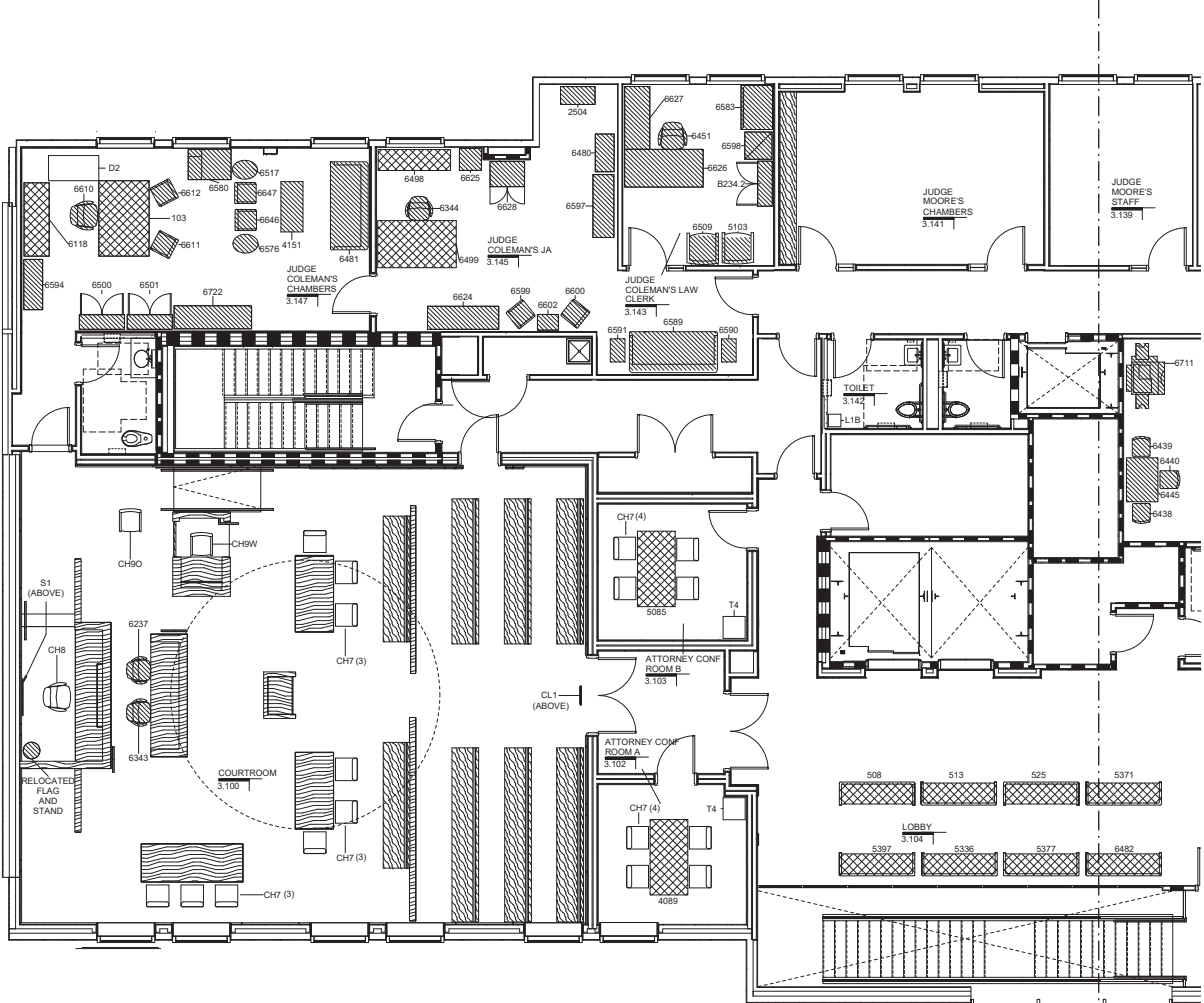
**1**  
**NEW AND RELOCATED FURNITURE PLAN - LEVEL 2 - AREA A**  
AN-103 SCALE: 1/4" = 1'-0"  
  
SCALE: 1/4"=1'-0"

**FURNITURE KEY**

- RELOCATED FURNITURE
- 10738 ← ASSET ID #
- NEW FURNITURE
- RELOCATED AND REUPHOLSTERED, REFINISHED OR REPAIRED FURNITURE

**FURNITURE LEGEND - NEW**

TYPE MARK	DESCRIPTION
BK1	2 HIGH BOOKCASE 30X15
CH1P	TASK CHAIR - PROBATION
CH2	STACK CHAIR
CH3B	WAITING AREA CHAIR - BANKRUPTCY
CH3P	WAITING AREA CHAIR - PROBATION
CH4B	CONFERENCE CHAIR - BANKRUPTCY
CH4P	CONFERENCE CHAIR - PROBATION
CH5	BREAK AREA CHAIR
CH6	SIDE CHAIR W/ TABLE ARM
CH7	TASK CHAIR, COURTROOM
CH8	JUDGE'S CHAIR
CH9O	OFFICER CHAIR
CH9W	WITNESS CHAIR
CH10	TASK STOOL, COUNTER HEIGHT
CL1	CLOCK, COURTROOM
D1B	U-SHAPED DESK - BANKRUPTCY
D1P	U-SHAPED DESK - PROBATION
D2	SIT TO STAND DESK
DP1	DISPLAY CASE
L1B	LOCKER W/ CUBBIES 12X12 - BANKRUPTCY
L1P	LOCKER W/ CUBBIES 12X12 - PROBATION
LF230B	2 HIGH LATERAL FILE 30X18 - BANKRUPTCY
LF230P	2 HIGH LATERAL FILE 30X18 - PROBATION
LF236	2 HIGH LATERAL FILE 36X18
LF336	3 HIGH LATERAL FILE 36X18
LF436	4 HIGH LATERAL FILE 36X18
LF530	5 HIGH LATERAL FILE 30X18
LF542	5 HIGH LATERAL FILE 42X18
MM1	MICROWAVE
P1	PODIUM
R1	REFRIGERATOR
S1	SEAL, COURTROOM
SH53624	HEAVY DUTY SHELVING 36X24
SH54824B	HEAVY DUTY SHELVING 48X24 - BANKRUPTCY
SH54824P	HEAVY DUTY SHELVING 48X24 - PROBATION
SH53615	MEDIUM DUTY SHELVING 36X15
T1	TABLE 60X24
T2	TABLE 72X36
T3	TABLE 96X36
T4	TABLE 22X22
T5	TABLE 60X30
WS1	WORKSTATION - PROBATION EMPLOYEE
WS2	WORKSTATION - BANKRUPTCY CASE MANAGER
WS3	WORKSTATION - PROBATION CLERICAL
WSCS1	WORKSURFACE - CUT TO FIT



**NEW AND RELOCATED FURNITURE PLAN - LEVEL 3 - AREA A**  
AN-105 SCALE: 1/4" = 1'-0"  
SCALE: 1/4" = 1'-0"

Consultants:

Seals:

General Notes:

Project Client:  
ADMINISTRATIVE OFFICE OF THE U.S. COURTS (AOCUS)

**FURNITURE ACQUISITION SERVICES**

ANNEX  
124 BARNARD STREET  
SAVANNAH, GA 31401

Number	Description	Date

Key Plan:

**FURNITURE LAYOUT AFTER PROCUREMENT/MIGRATION PLAN**  
NOVEMBER 30, 2020

CAD File:  
Project No: FCYC1805  
Copyright: 2018 Jacobs

Drawing Sheet Title:  
**ANNEX FURNITURE PLAN - LEVEL 3 - AREA A**

Drawing Sheet Number:  
**AN-105**

Owner's Drawing Sheet No.: